



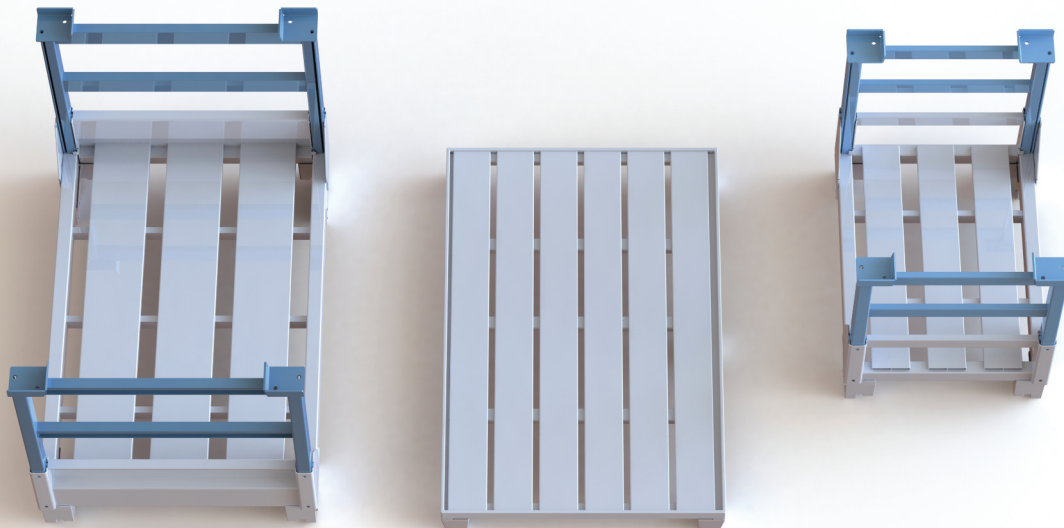
“Simplifying
logistics”

Stockeyo[®]

Stackable, folding
aluminium pallets

A **DM2F** Group Brand

stockeo-pro.com



Stockeo®

Aluminium pallets are light, robust, stackable 3 high and reusable, reducing transport costs and simplifying handling.

Stockeo® aluminium pallets are built to last with the highest quality construction.

Aluminium pallets are an ideal match for your storage and logistics requirements

ALUMINIUM STANDARD PALLET

Dimensions (L x W x H): 1218 x 786 x 840 mm

Weight: ± 27 kg

Stackable 3 high (open) and 8 high (folded).





optimising logistics simplifying handling

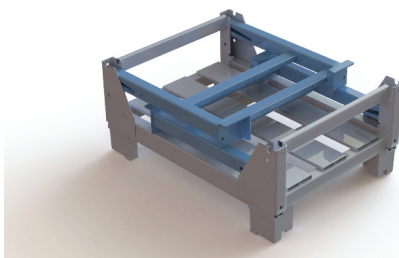
ALUMINIUM HALF PALLET

Dimensions (L x W x H): 818 x 586 x 730 mm

Half the size of our standard pallet.

Weight: ± 15 kg

Stackable 3 high (open) and 8 high (folded).



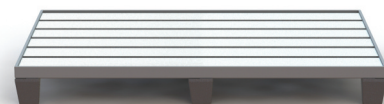
FLAT PALLET AND HALF PALLET

Pallet dimensions (L x W x H): 1200 x 800 x 135 mm

Half pallet dimensions (L x W x H): 800 x 600 x 135 mm

Weight: ± 11 kg (pallet), ± 7 kg (half pallet).

Stackable 20 high.



Stockeyo®

optimising logistics, simplifying handling



stockeo-pro.com

The DM2F group is built on research and innovation with the creation of patented, exclusive, high performance products particularly for storage and logistics.

	Standard pallets		Tall pack pallets		Other ranges
	RPA001	RPA002	RPA008	RPA010	
Dimensions L x W x H (mm)	1 218 x 786 x 840	1 218 x 786 x 840	1 218 x 786 x 1 130	1 218 x 786 x 1 130	Please consult us
Weight (kg)	27	21	24	24	
Stackable pallets OPEN/FOLDED	3/8	3/8	2/8	2/8	
Max load/pallet/level (kg)	450		550		
Stackable pallets per lorry OPEN/FOLDED	99/264	99/264	66/264	66/264	
Frame member (mm)	1 175	1 179	1 175	1 175	
Hinge bracket thickness (mm)	5	4	4	4	
Grooved upright	yes	yes	yes	yes	
Number of platform slats	3 (large)	4	4	4	
Type of legs and feet	short fitted screwed				
Label holder	Option	Option	yes	yes	
Optional fish tray	no	under development	under development	under development	
Optional cover	yes	yes	yes (sides only)	yes	

Design, size and materials selected for:

- Optimising loading
- Protecting the goods
- Minimising handling
- Withstanding heavy loads
- Reducing waste
- Reusing and recycling
- Reducing your carbon footprint
- Stacking a wooden or plastic pallet*

If you have any particular requirements or specifications, our design office will be pleased to help you find the best solution



EASY FINANCING
TERMS. LONG-TERM
LEASING
POSSIBILITY

A **DM2F** Group Brand

31, ZA du Grand Champ
01640 Jujurieux | France
☎ +33 (0) 4 74 37 15 40

www.dm2f.com

PARANOR CERTIFICATION
NF
SERVICE
LNE-EN
13646